

# ONSITE HAUL ROUTES

## Work Zone 1 A



GMCC will coordinate with local residents & Businesses regarding temporary closures and routes to accommodate Business Access.

Export Trucking

Inbound

Outbound

Import Trucking

Inbound

Outbound



Gary Merlino Construction Co., Inc.

### Traffic Control Plan Information

**Submittal Date:**  
**Project:** Terminal 117  
**Location:** 3500 Dallas Ave. South of 16th Av  
**SDOT Project:** 179051  
**Contact:** Eduardo Sanchez  
**Contact Phone:** 206-786-2152  
**Scope of Work:** Demo & Restoration  
**Dates:** TBD  
**Working Hours:** 7:00am - 4:00pm  
**Metro:** GMCC will Coordinate with Metro Regarding Stop Relocations, Deactivations, and Closures

### Traffic Control Plan Notes

- Open excavations to be covered and secured at the end of each working day
- Travel Lanes to maintain 12' width minimum
- TCP devices and setup shall conform to SDOT TCM and MUTCD
- Work zone to be delineated by cones/barrels/barricades/fencing

SDOT TCM = Seattle Department of Transportation Traffic Control manual

MUTCD = Manual of Uniform Traffic Control Devices

= Work Zone Including Staging

= Direction of Traffic

Road Class	Minimum Sign Spacing (Feet)			Minimum Sign Length (Feet)		Minimum Sign Area (sq ft)		Minimum Sign Spacing (Feet)		Minimum Sign Length (Feet)		Minimum Sign Area (sq ft)	
	A	B	C	A	B	A	B	A	B	A	B	A	B
Class I - Central Business District, University District	150	150	150	48	48	144	144	150	150	48	48	144	144
Class II - Arterial Streets	150	150	150	48	48	144	144	150	150	48	48	144	144
Class III - All partially or fully controlled access arterial streets	150	150	150	48	48	144	144	150	150	48	48	144	144

**ROAD CLASS DEFINITIONS**  
**CLASS I** - Central Business District, University District  
**CLASS II** - Arterial Streets  
**CLASS III** - All partially or fully controlled access arterial streets  
 \* Advance warning sign spacing depends on availability of curb space  
 \*\* Vertical barricades, cones, tubular guideposts

# ONSITE HAUL ROUTES

## Work Zone 1 B



Gary Merlino Construction Co., Inc.

GMCC will coordinate with local residents & Businesses regarding temporary closures and routes to accommodate Business Access.

Export Trucking

Inbound

Outbound

Import Trucking

Inbound

Outbound

### Traffic Control Plan Information

Submittal Date:

Project: Terminal 117

Location: 8500 Dallas Ave. South of 16th Av

SDOT Project: 179051

Contact: Eduardo Sanchez

Contact Phone: 206-786-2152

Scope of Work: Demo & Restoration

Dates: TBD

Working Hours: 7:00am - 4:00pm

Metro: GMCC will Coordinate with Metro Regarding Stop Relocations, Deactivations, and Closures

### Traffic Control Plan Notes

- Open excavations to be covered and secured at the end of each working day
- Travel lanes to maintain 11' width minimum
- TCM devices and setup shall conform to SDOT TCM and MUTCD
- Work zone to be delineated by cones/barricade/fencing

SDOT TCM = Seattle Department of Transportation Traffic Control manual

MUTCD = Manual of Uniform Traffic Control Devices

= Work Zone Including Staging

= Direction of Traffic

CLASS OF ROAD	VEHICLE SPACING TO PREVENT COLLISIONS			VEHICLE SPACING TO PREVENT COLLISIONS			VEHICLE SPACING TO PREVENT COLLISIONS		
	A	B	C	A	B	C	A	B	C
1	100	150	200	100	150	200	100	150	200
2	100	150	200	100	150	200	100	150	200
3	100	150	200	100	150	200	100	150	200

ROAD CLASS DEFINITIONS  
 CLASS I - Central Business District, University District  
 CLASS II - Arterial Streets  
 CLASS III - All partially or full controlled access arterial streets  
 \* Advance warning sign spacing depends on availability of curb space  
 \*\* Vertical barricades, cones, tubular guideposts



# ONSITE HAUL ROUTES

## Work Zone 2



GMCC will coordinate with local residents & Businesses regarding temporary closures and routes to accommodate Business Access.

Export Trucking  
Inbound →  
Outbound →

Import Trucking  
Inbound →  
Outbound →



Gary Merlino Construction Co., Inc.

### Traffic Control Plan Information

**Submittal Date:**  
**Project:** Terminal 117  
**Location:** 8500 Dallas Ave. South of 16th Av  
**SDOT Project:** 179051  
**Contact:** Eduardo Sanchez  
**Contact Phone:** 206-786-2152  
**Scope of Work:** Demo & Restoration  
**Dates:** TBD  
**Working Hours:** 7:00am - 4:00pm  
**Metro:** GMCC will Coordinate with Metro Regarding Stop Relocations, Deactivations, and Closures

### Traffic Control Plan Notes

- Open excavations to be covered and secured at the end of each working day
- Travel Lanes to maintain 12' width minimum
- TCM devices and setup shall conform to SDOT TCM and MUTCD
- Work zone to be delineated by cones/barricades/fencing

SDOT TCM = Seattle Department of Transportation Traffic Control manual

MUTCD = Manual of Uniform Traffic Control Devices

= Work Zone Including Staging

→ = Direction of Traffic

CLASS OF ROAD	STANDARD SIGN SPACING			LIMITS			STANDARD DEVICE SPACING IN FEET			STANDARD SIGN SPACING IN FEET		
	A	B	C	From	To	End	Vehicle	Barrier	Other	Vehicle	Barrier	Other
1	100	100	75	100	100	100	15	15	15	30	30	30
2	100	100	75	100	100	100	15	15	15	30	30	30
3	100	100	75	100	100	100	15	15	15	30	30	30

ROAD CLASS DEFINITIONS  
CLASS I - Central Business District, University District  
CLASS II - Arterial Streets  
CLASS III - All partially or full controlled access arterial street  
\* Advance warning sign spacing depends on availability of curb space  
\*\* Vertical barricades, cones, tubular guideposts

# ONSITE HAUL ROUTES

## Work Zone 3



Gary Merlino Construction Co., Inc.

GMCC will coordinate with local residents & Businesses regarding temporary closures and routes to accommodate Business Access.

Export Trucking

Inbound

Outbound

Import Trucking

Inbound

Outbound

### Traffic Control Plan Information

Submittal Date:

Project: Terminal 117

Location: 3500 Dallas Ave. South of 16th Av

SDOT Project: 179951

Contact: Eduardo Sanchez

Contact Phone: 206-786-2152

Scope of Work: Demo & Restoration

Dates: TBD

Working Hours: 7:00am - 4:00pm

Metro: GMCC will Coordinate with Metro Regarding Stop Relocations, Deactivations, and Closures

### Traffic Control Plan Notes

- Open excavations to be covered and secured at the end of each working day
- Travel Lanes to maintain 11' width minimum
- TCM devices and setup shall conform to SDOT TCM and MUTCD
- Work zone to be delineated by cones/barricades/timing

SDOT TCM = Seattle Department of Transportation Traffic Control manual

MUTCD = Manual of Uniform Traffic Control Devices

= Work Zone Including Staging

= Direction of Traffic

ROADWAY CLASS	ROADWAY WIDTH (FEET)			LANES		TRUCKS		TRUCKS		TRUCKS		WARNING SIGN MIN. SIZE IN FEET
	A	B	C	1	2	1	2	1	2	1	2	
1	150	150	150	150	150	150	150	150	150	150	150	30X30
2	150	150	150	150	150	150	150	150	150	150	150	30X30
3	150	150	150	150	150	150	150	150	150	150	150	30X30
4	150	150	150	150	150	150	150	150	150	150	150	30X30
5	150	150	150	150	150	150	150	150	150	150	150	30X30
6	150	150	150	150	150	150	150	150	150	150	150	30X30
7	150	150	150	150	150	150	150	150	150	150	150	30X30
8	150	150	150	150	150	150	150	150	150	150	150	30X30
9	150	150	150	150	150	150	150	150	150	150	150	30X30
10	150	150	150	150	150	150	150	150	150	150	150	30X30
11	150	150	150	150	150	150	150	150	150	150	150	30X30
12	150	150	150	150	150	150	150	150	150	150	150	30X30
13	150	150	150	150	150	150	150	150	150	150	150	30X30
14	150	150	150	150	150	150	150	150	150	150	150	30X30
15	150	150	150	150	150	150	150	150	150	150	150	30X30
16	150	150	150	150	150	150	150	150	150	150	150	30X30
17	150	150	150	150	150	150	150	150	150	150	150	30X30
18	150	150	150	150	150	150	150	150	150	150	150	30X30
19	150	150	150	150	150	150	150	150	150	150	150	30X30
20	150	150	150	150	150	150	150	150	150	150	150	30X30
21	150	150	150	150	150	150	150	150	150	150	150	30X30
22	150	150	150	150	150	150	150	150	150	150	150	30X30
23	150	150	150	150	150	150	150	150	150	150	150	30X30
24	150	150	150	150	150	150	150	150	150	150	150	30X30
25	150	150	150	150	150	150	150	150	150	150	150	30X30
26	150	150	150	150	150	150	150	150	150	150	150	30X30
27	150	150	150	150	150	150	150	150	150	150	150	30X30
28	150	150	150	150	150	150	150	150	150	150	150	30X30
29	150	150	150	150	150	150	150	150	150	150	150	30X30
30	150	150	150	150	150	150	150	150	150	150	150	30X30
31	150	150	150	150	150	150	150	150	150	150	150	30X30
32	150	150	150	150	150	150	150	150	150	150	150	30X30
33	150	150	150	150	150	150	150	150	150	150	150	30X30
34	150	150	150	150	150	150	150	150	150	150	150	30X30
35	150	150	150	150	150	150	150	150	150	150	150	30X30
36	150	150	150	150	150	150	150	150	150	150	150	30X30
37	150	150	150	150	150	150	150	150	150	150	150	30X30
38	150	150	150	150	150	150	150	150	150	150	150	30X30
39	150	150	150	150	150	150	150	150	150	150	150	30X30
40	150	150	150	150	150	150	150	150	150	150	150	30X30
41	150	150	150	150	150	150	150	150	150	150	150	30X30
42	150	150	150	150	150	150	150	150	150	150	150	30X30
43	150	150	150	150	150	150	150	150	150	150	150	30X30
44	150	150	150	150	150	150	150	150	150	150	150	30X30
45	150	150	150	150	150	150	150	150	150	150	150	30X30
46	150	150	150	150	150	150	150	150	150	150	150	30X30
47	150	150	150	150	150	150	150	150	150	150	150	30X30
48	150	150	150	150	150	150	150	150	150	150	150	30X30
49	150	150	150	150	150	150	150	150	150	150	150	30X30
50	150	150	150	150	150	150	150	150	150	150	150	30X30

ROAD CLASS DEFINITIONS:  
CLASS I - Central Business District, University District  
CLASS II - Arterial Streets  
CLASS III - All partially or full controlled access arterial streets  
\* Advance warning sign spacing depends on availability of curb space

\*\* Vertical barricades, cones, tubular guideposts



# ONSITE HAUL ROUTES

## Work Zone 4



GMCC will coordinate with local residents & Businesses regarding temporary closures and routes to accommodate Business Access.

Export Trucking

Inbound

Outbound

Import Trucking

Inbound

Outbound



Gary Merlino Construction Co., Inc.

### Traffic Control Plan Information

**Submittal Date:**  
**Project:** Terminal 117  
**Location:** 5500 Dallas Ave. South of 16th Av  
**SDOT Project:** 179951  
**Contact:** Eduardo Sanchez  
**Contact Phone:** 206-786-2152  
**Scope of Work:** Demo & Restoration  
**Dates:** TBD  
**Working Hours:** 7:00am - 4:00pm  
**Metro:** GMCC will Coordinate with Metro Regarding Stop Relocations, Deactivations, and Closures

### Traffic Control Plan Notes

- Open excavations to be covered and secured at the end of each working day
- Travel Lanes to maintain 11' width minimum
- TCM Devices and setup shall conform to SDOT TCM and MUTCD
- Work zone to be delineated by cones/barrels/barricades/fencing

SDOT TCM = Seattle Department of Transportation Traffic Control manual

MUTCD = Manual of Uniform Traffic Control Devices

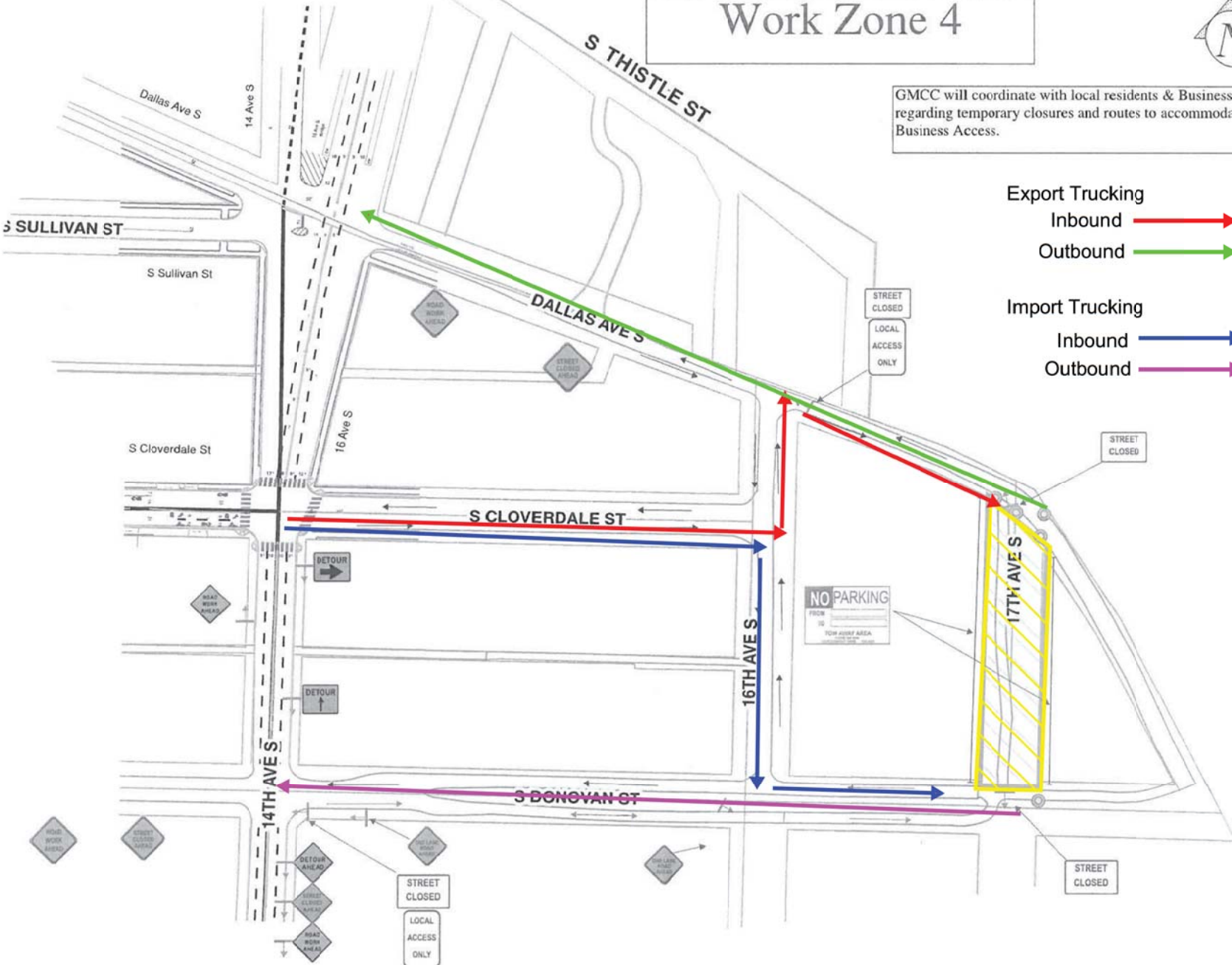
= Work Zone Including Staging

= Local Access

= Direction of Traffic

CLASS OF ROAD	STANDARD SIGN SPACING			SPEED LIMIT		STANDARD ADVANCE WARNING SPACING		WARNING SIGN MIN. DIST. IN FEET
	A	B	C	FEET	FEET	FEET	FEET	
1	150	100	75	75	150	100	75	2000
2	150	100	75	100	150	100	75	2000
3	150	100	75	100	150	100	75	2000

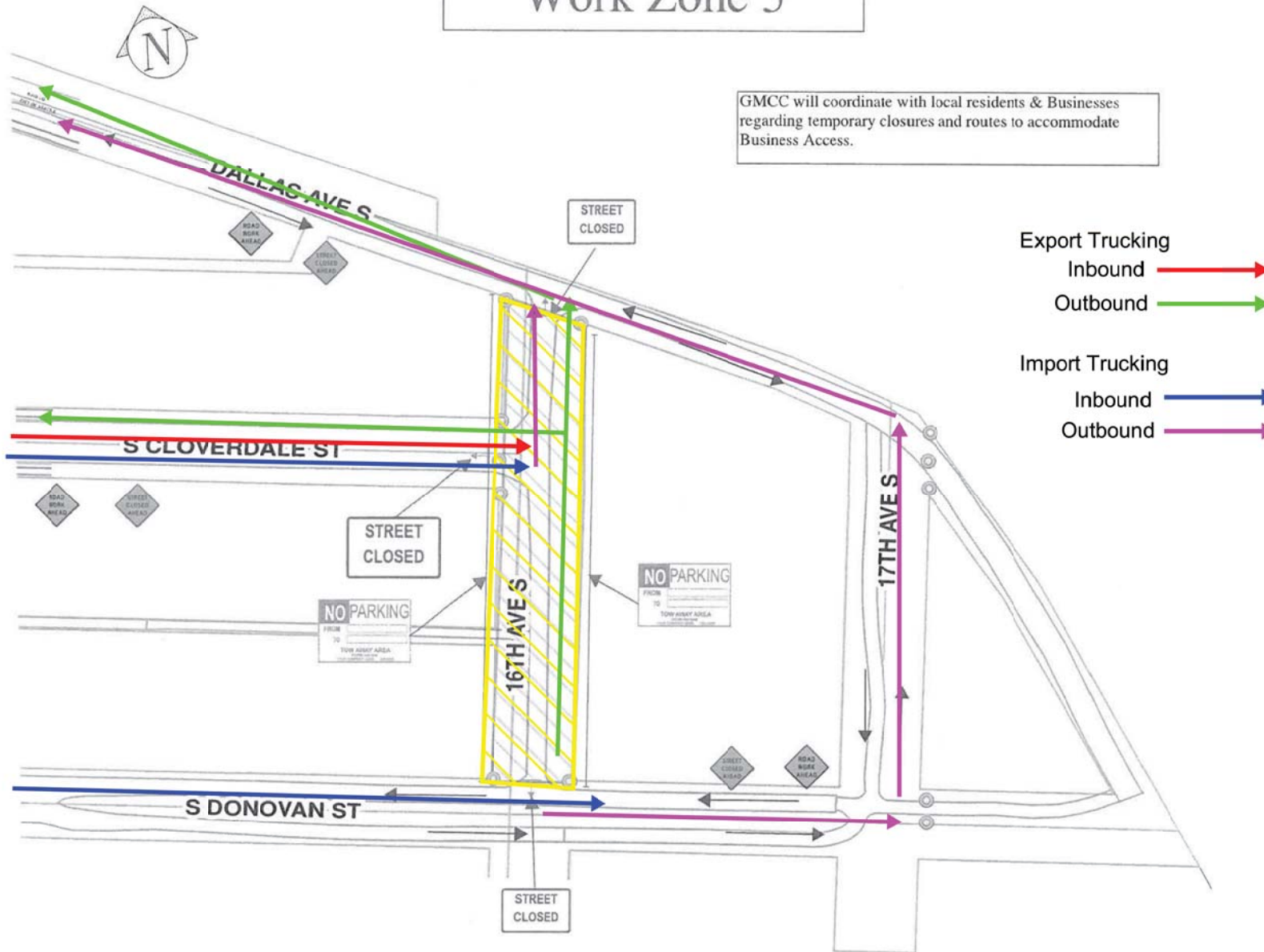
ROAD CLASS DEFINITIONS:  
 CLASS I - Central Business District, University District  
 CLASS II - Arterial Streets  
 CLASS III - All partially or full controlled access arterial street  
 \* Advance warning sign spacing depends on availability of curb space  
 \*\* Vertical barricades, cones, tubular guideposts



# ONSITE HAUL ROUTES

## Work Zone 5

GMCC will coordinate with local residents & Businesses regarding temporary closures and routes to accommodate Business Access.



### Traffic Control Plan Information

**Submittal Date:**  
**Project:** Terminal 117  
**Location:** 8500 Dallas Ave. South of 16th Ave  
**SDOT Project:** 179051  
**Contact:** Eduardo Sanchez  
**Contact Phone:** 206-786-2152  
**Scope of Work:** Demo & Restoration  
**Dates:** TBD  
**Working Hours:** 7:00am - 4:00pm  
**Metro:** GMCC will Coordinate with Metro Regarding Stop Relocations, Deactivations, and Closures

### Traffic Control Plan Notes

- Open excavations to be covered and secured at the end of each working day
  - Travel Lanes to maintain 12' width minimum
  - TCP devices and setup shall conform to SDOT TCM and MUTCD
  - Work zone to be delineated by cones/barricades/flagging
- SDOT TCM = Seattle Department of Transportation Traffic Control manual  
 MUTCD = Manual of Uniform Traffic Control Devices

= Work Zone Including Staging

= Direction of Traffic

Lanes or Roadway	SIGNALIZED OR SPACED			TAPER LENGTH (ft)	SIGNALIZED OR SPACED			TAPER LENGTH (ft)	SIGNALIZED OR SPACED			TAPER LENGTH (ft)
	A	B	C		A	B	C		A	B	C	
1	150	150	150	75	150	150	150	75	150	150	150	75
2	150	150	150	75	150	150	150	75	150	150	150	75
3	150	150	150	75	150	150	150	75	150	150	150	75

**ROAD CLASS DEFINITIONS**  
 CLASS I - Central Business District, University District  
 CLASS II - Arterial Streets  
 CLASS III - All partially or fully controlled access arterial streets  
 \* Advance warning sign spacing depends on availability of curb space  
 \*\* Vertical barricades, cones, tubular guideposts