

APPENDIX H. FIELD FORMS, LOGS, AND NOTES

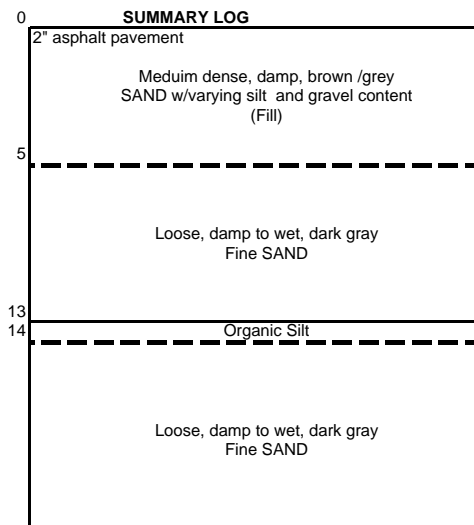
BORING & MONITORING WELL - DESCRIPTION OF SAMPLES, TESTS, AND INSTALLATION

Location **T-117-SB15**

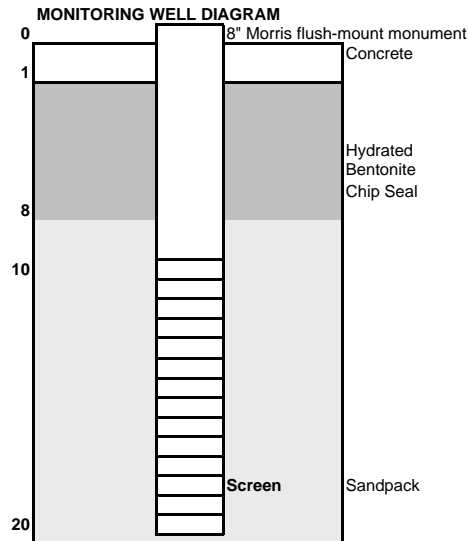
Field Rep: DG Cooper		Location: 1' east of PS-1 mark		Elevation (Ft.): Top PVC Pipe: Grnd Surface: asphalt pavement			
Drilling Co.: Cascade		Date Completed: 6/6/05		Weather: Sunny 75F			
Driller: Frank		Hammer Type: 140 # SPT		Sampler Type: 3" dia. D&M Split Spoon			
Drill Type: CME 75		Size/Type Casing: 4" ID Hollow-stem auger					
Spl.No.	Type sample saved	Drill Action	Spl Depth (Ft.) From - To	Blows/ 6 inches	Spl length inches	Time	Sample Description
T117-SB15-01	8/4 oz. jar	gravelly	0-1.5	6/6/5	18	1420	3" crushed rock atop Medium dense damp, brown, silty SAND, w/ some gravel
T117-SB15-02	8/4 oz. jar zip-loc	smoother	2.5-4	5/7/6	18	1425	M dense, damp, dark gray, F-M SAND w/ pea gravel
T117-SB15-03	8/4 oz. jar zip-loc		5-6.5	5/5/4	18	1430	Loose, damp, dark gray, F SAND
T117-SB15-04	8/4 oz. jar zip-loc		7.5-9	2/2/2	18	1435	Loose, moist, dark gray, F SAND
T117-SB15-05	8/4 oz. jar zip-loc		10-11.5	2/2/2	18	1440	Loose, wet, dark gray, F SAND
T117-SB15-06	8/4 oz. jar zip-loc		12.5-14	1/2/4	18	1445	Soft, wet, mottled gray, SILT w/peat interbeds, black stained banding
T117-SB15-07	8/4 oz. jar zip-loc		15-16.5	6/6/8	18	1450	M dense, wet, dark gray, F SAND w/ oxidation banding @ 16'
T117-SB15-08	8/4 oz. jar zip-loc		20-21.5	4/4/5	18	1455	Loose, wet, dark gray, F SAND

LABORATORY SAMPLES: PCBs, TOC, Total solids, grain size

Depth(ft.)



MW-7



BORING - DESCRIPTION OF SAMPLES, TESTS, AND INSTALLATION

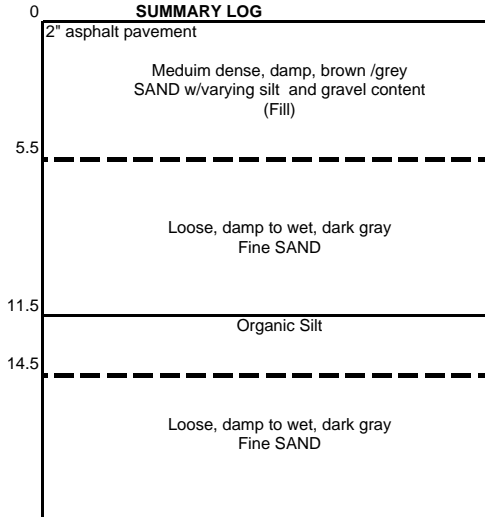
Location

T-117-SB16

Field Rep: DG Cooper			Location: 3' east of PS-2 mark				
Drilling Co.: Cascade			Elevation (Ft.): Top PVC Pipe:		Grnd Surface: asphalt pavemt		
Driller: Frank			Date Completed: 6/6/05				
Drill Type: CME 75			Weather: Sunny 65F				
Size/Type Casing: 4" ID Hollow-stem auger			Hammer Type: 140 # SPT		Sampler Type: 3" dia D&M Split Spoon		
Spl.No.	Type sample saved	Drill Action	Spl Depth (Ft.) From - To	Blows/ 6 inches	Spl length inches	Time	Sample Description
T117-SB16-01	8/4 oz. jar		0-1.5	19/27/14	18	1320	3" crushed rock atop Medium dense
	zip-loc	gravelly					damp, brown, gravelly, silty, SAND
T117-SB16-02	8/4 oz. jar		2.5-4	7/10/11	18	1325	M dense, damp, mottled brown
	zip-loc						silty, SAND w/trace gravel
T117-SB16-03	8/4 oz. jar		5-6.5	8/14/12	18	1330	M dense, damp, gray, F-M SAND
	zip-loc						w/black stained sandy gravel @ 5'
T117-SB16-04	8/4 oz. jar	smoother	7.5-9	2/3/3	18	1335	Loose, moist, gray, F SAND
	zip-loc						
T117-SB16-05	8/4 oz. jar		10-11.5	2/3/3	18	1340	Loose, moist, dark gray, F SAND
	zip-loc						w/SILT at base of sample
T117-SB16-06	8/4 oz. jar		12.5-14	2/2/2	18	1345	Soft, wet, dark gray, SILT
	zip-loc						w/ organics @ 12.5', black stained banding
T117-SB16-07	8/4 oz. jar		15-16.5	6/5/6	18	1350	Medium dense, wet, dark gray, F SAND
	zip-loc						
T117-SB16-08	8/4 oz. jar		17.5-19	4/4/4	18	1400	Medium dense, wet, dark gray, F SAND
	zip-loc						

LABORATORY SAMPLES: PCBs, TOC, Total solids, grain size

Depth(ft.)



Note:
Boring backfilled with bentonite chip

BORING - DESCRIPTION OF SAMPLES, TESTS, AND INSTALLATION

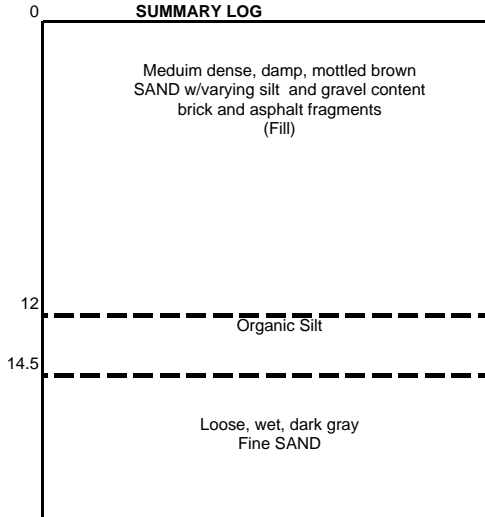
Location

T-117-SB17

Field Rep: DG Cooper			Location: 3' west of staked loction				
Drilling Co.: Cascade			Elevation (Ft.): Top PVC Pipe:		Grnd Surface: thin asphalt (<1")		
Driller: Frank			Date Completed: 6/6/05				
Drill Type: CME 75			Weather: cloudy 60F				
Size/Type Casing: 4" ID Hollow-stem auger			Hammer Type: 140 # SPT		Sampler Type: 3" dia D&M Split Spoon		
Spl.No.	Type sample saved	Drill Action	Spl Depth (Ft.) From - To	Blows/ 6 inches	Spl length inches	Time	Sample Description
T117-SB17-01	8/4 oz. jar	gravelly	0-1.5	4/4/4	18	1145	Loose, damp, mot brown, silty SAND w/some gravel, asphalt chunks
T117-SB17-02	8/4 oz. jar zip-loc		2.5-4	2/2/2	18	11`50	Loose, moist, mot brown, silty, SAND w/brick fragments, black asphaltic chips
T117-SB17-03	8/4 oz. jar zip-loc		5-6.5	5/8/12	18	1155	M dense, moist, brown, F-M SAND w/ some silt, trace gravel
T117-SB17-04	8/4 oz. jar zip-loc		7.5-9	8/9/6	18	1200	M dense, damp, mot gray, gravelly SAND w/trace silt, asphalt chunks throughout
T117-SB17-05	8/4 oz. jar zip-loc		10-11.5	8/12/17	18	1205	0.5' brown, gravelly, silty, SAND atop Dk gray, gravelly SAND w/trace silt, blk stain
T117-SB17-06	8/4 oz. jar zip-loc	smoother	12.5-14	1/2/2	18	1210	V soft, wet, gry-bwn, organic SILT
T117-SB17-07	8/4 oz. jar zip-loc		15-16.5	4/5/5	18	1215	Loose, wet, Dk gray, F SAND
T117-SB17-08	8/4 oz. jar zip-loc		17.5-19	1/6/3	18	1220	Loose, wet, Dk gray, F SAND
T117-SB17-08	8/4 oz. jar zip-loc		20-21.5	7/8/9	18	1225	Loose, wet, Dk gray, F SAND

LABORATORY SAMPLES: PCBs, TOC, Total solids, grain size

Depth(ft.)



Note:
 Boring backfilled with bentonite chip

BORING & MONITORING WELL - DESCRIPTION OF SAMPLES, TESTS, AND INSTALLATION

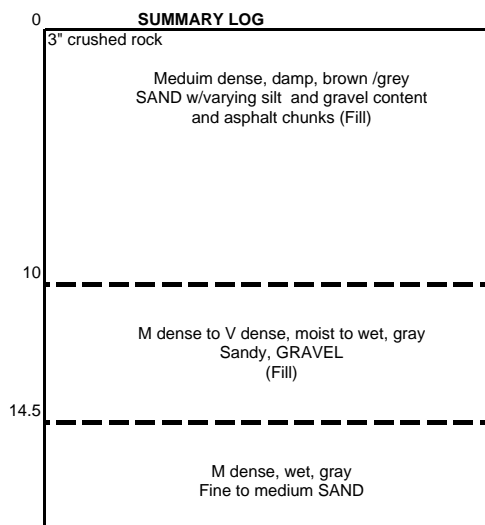
Location

T-117-SB18

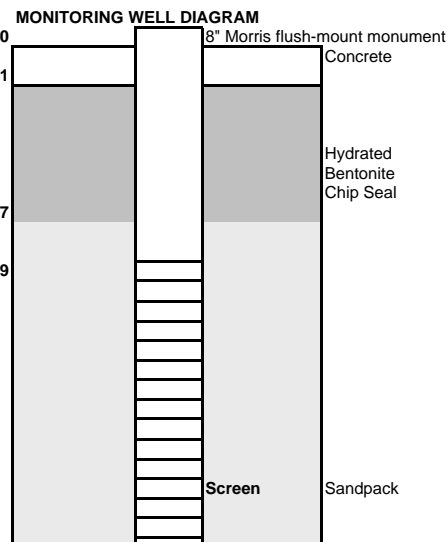
Field Rep: DG Cooper			Location: 3' west of staked location				
Drilling Co.: Cascade			Elevation (Ft.): Top PVC Pipe:		Grnd Surface: crushed rock		
Driller: Frank			Date Completed: 6/6/05				
Drill Type: CME 75			Weather: Sunny 75F				
Size/Type Casing: 4" ID Hollow-stem auger			Hammer Type: 140 # SPT		Sampler Type: 3" dia. D&M Split Spoon		
Spl.No.	Type sample saved	Drill Action	Spl Depth (Ft.) From - To	Blows/ 6 inches	Spl length inches	Time	Sample Description
T117-SB18-01	8 oz. jar		0-1.5	6/5/5	18	0930	M dense, damp brown silty, SAND w/asphalt chunks
T117-SB18-02	8/4 oz. jar zip-loc	gravelly	2.5-4	3/3/4	18	0935	Loose, moist, mot brown, silty, SAND w/trace gravel
T117-SB18-03	8/4 oz. jar zip-loc	Hard gravelly	5-6.5	6/10/7	18	0940	Loose, moist, mot brown, F-M SAND w/some silt, coal-like chips
			7.5-9	70-6"	0	0945	no recovery
T117-SB18-04	8 oz. jar		10-11.5	12/13/22	18	0950	M dense, moist, gray, sandy, GRAVEL poor recovery
T117-SB18-05	8 oz. jar	very gravelly	12.5-14	55-6"	6	0955	V dense, moist, sandy, GRAVEL w/concrete chunks
T117-SB18-06	8/4 oz. jar		15-16.5	50-6"	6	1000	V dense, wet, F-M SAND w/concrete chunks
T117-SB18-078	8/4 oz. jar zip-loc		17.5-19	12/14/24	18	1005	M dense, wet, Dk gray, F-M SAND

LABORATORY SAMPLES: PCBs, TOC, Total solids, grain size

Depth(ft.)



MW-8



T-117-PS1A

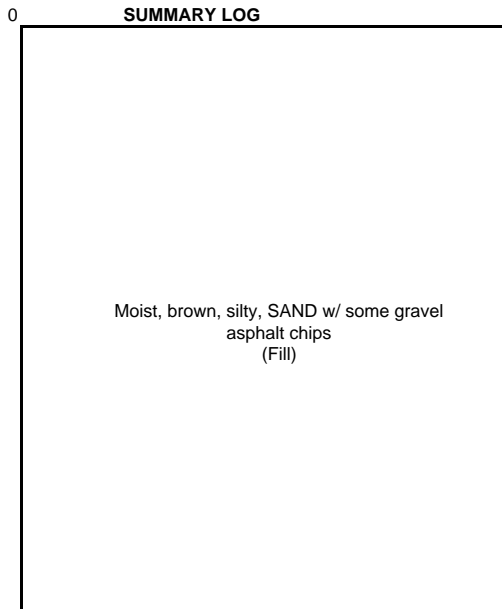
BORING - DESCRIPTION OF SAMPLES, TESTS, AND INSTALLATION

Location

Field Rep: DG Cooper				Location: Original staked location of SB-15			
Drilling Co.: Cascade				Elevation (Ft.): ~4' above grade		Grnd Surface: soil berm	
Driller: Jamis				Date Completed: 6/8/05			
Drill Type: Percussion - Hand Probe				Weather: cloudy 60F			
Size/Type Casing: 1.25" rod				Hammer Type: 60# jackhammer		Sampler: 4' x 1.25" acrylic lined core tube	
Spl.No.	Type sample saved	Drill Action	Spl Depth (Ft.) From - To	Blows/ 6 inches	Spl length inches	Time	Sample Description
T117-PS1A-01	8/4 oz. jar		0-2		13	1115	Moist, brown, silty, SAND w/ some gravel, asphalt chips
T117-PS1A-02	8/4 oz. jar		2-4		14	1116	Moist, brown, silty, SAND w/some gravel trace asphalt chip
							Refusal @ 4.2'

LABORATORY SAMPLES: PCBs, TOC, Total solids
 T-117-PS11ARB rinsate blank @ 1120

Depth(ft.)



Note:
 Boring backfilled with bentonite chip

T-117-PS2A

BORING - DESCRIPTION OF SAMPLES, TESTS, AND INSTALLATION

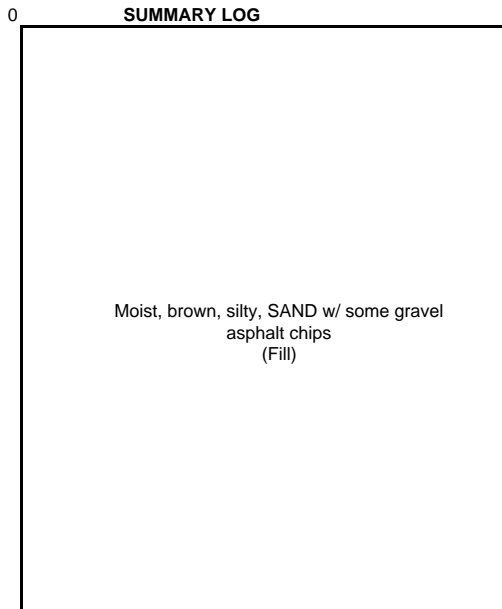
Location

Field Rep: DG Cooper				Location: Original staked location of SB-16			
Drilling Co.: Cascade				Elevation (Ft.): ~4' above grade		Grnd Surface: soil berm	
Driller: Jamis				Date Completed: 6/8/05			
Drill Type: Percussion - Hand Probe				Weather: cloudy 60F			
Size/Type Casing: 1.25" rod				Hammer Type: 60# jackhammer		Sampler: 4' x 1.25" acrylic lined core tube	
Spl.No.	Type sample saved	Drill Action	Spl Depth (Ft.) From - To	Blows/ 6 inches	Spl length inches	Time	Sample Description
T117-PS2A-01	8/4 oz. jar		0-2		14	1130	Moist, brown, silty, SAND w/some gravel asphaltic chip
T117-PS2A-02	8/4 oz. jar		2-4		24	1131	moist, Dk brown, silty to gravelly, SAND w/asphalt chip
T117-PS2A-03	8/4 oz. jar		4-6		24	1132	moist, mottled brown, silty, SAND w/some gravel, trace asphalt chip

LABORATORY SAMPLES:

PCBs, TOC, Total solids
 T117-DUPL2 duplicate sample of T117-PS2A-02

Depth(ft.)



Note:
 Moved hole 2' to the north due to presence of asphaltic roofing underlayment
 Boring backfilled with bentonite chip

BORING - DESCRIPTION OF SAMPLES, TESTS, AND INSTALLATION

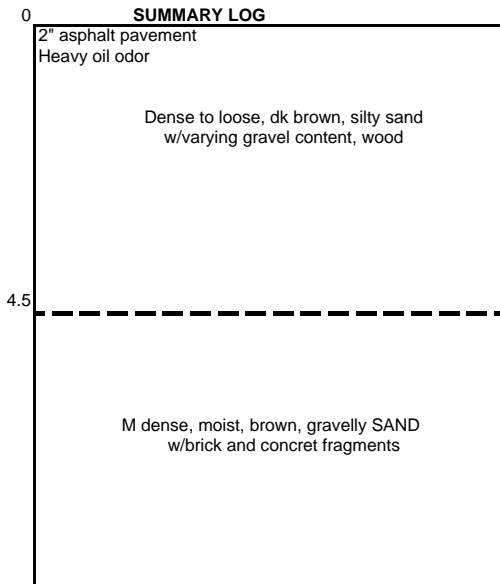
Location

T-117-PS3

Field Rep: DG Cooper		Location: 14' inside edge of pavement, 16' west of SB-17		Elevation (Ft.):		Grnd Surface: asphalt pavement	
Drilling Co.: Cascade		Driller: Scott		Date Completed: 6/21/05		Weather: cloudy 70F	
Drill Type: CME 75		Size/Type Casing: 4" ID Hollow-stem auger		Hammer Type: 140 # SPT		Sampler Type: 3" dia D&M Split Spoon	
Spl.No.	Type sample saved	Drill Action	Spl Depth (Ft.) From - To	Blows/ 6 inches	Spl length inches	Time	Sample Description
T117-PS3-01	8/4 oz. jar	medium gravelly	0-1.5	22/15/12	18	1405	Dense, moist, Dk bwn, gravelly, silty, SAND heavy oil odor
T117-PS3-02	8/4 oz. jar		2.5-4	4/4/5	18	1410	Loose, moist, Dk brown, silty, SAND w/trace gravel, wood
T117-PS3-03	8/4 oz. jar		5-6.5	12/15/15	18	1415	M dense, moist, brown, gravelly, SAND w/some silt
T117-PS3-04	8/4 oz. jar	hard gravelly	7.5-9	27/50-6"	18	1425	M dense, moist, brown, gravelly, SAND w/some silt, brick/concrete fragments

LABORATORY SAMPLES: PCBs, TOC, Total solids

Depth(ft.)



Note:
 Boring backfilled with bentonite chip

BORING - DESCRIPTION OF SAMPLES, TESTS, AND INSTALLATION

Location

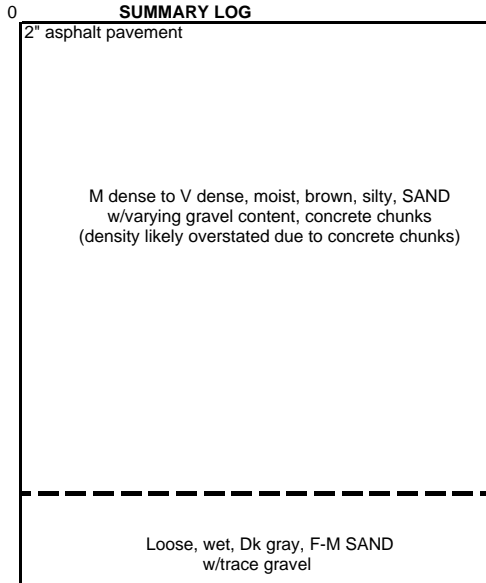
T-117-PS4

Field Rep: DG Cooper			Location: 8' inside curb, 10' west of SB-18				
Drilling Co.: Cascade			Elevation (Ft.):		Grnd Surface: asphalt pavement		
Driller: Scott			Date Completed: 6/21/05				
Drill Type: CME 75			Weather: cloudy 70F				
Size/Type Casing: 4" ID Hollow-stem auger			Hammer Type: 140 # SPT		Sampler Type: 3" dia D&M Split Spoon		
Spl.No.	Type sample saved	Drill Action	Spl Depth (Ft.) From - To	Blows/ 6 inches	Spl length inches	Time	Sample Description
T117-PS4-01	8/4 oz. jar	moderate	0-1.5	20/22/25	18	1325	Dense, moist, Dk bwn, gravelly, silty, SAND w/brick, trace asphalt chip
T117-PS4-02	8/4 oz. jar		2.5-4	10/7/6	18	1330	M dense, moist, brown, silty, F-M SAND w/trace gravel, concrete
T117-PS4-03	8/4 oz. jar		5-6.5	20/25/27	18	1340	V Dense, moist, gray, F-M SAND w/stained concrete fragment
T117-PS4-04	8/4 oz. jar	easy	7.5-9	5/6/6	18	1345	Loose, wet, Dk gray, F-M SAND w/trace gravel

LABORATORY SAMPLES:

PCBs, TOC, Total solids
 T-117-DUPL3 duplicate of T117-PS4-04 @1350

Depth(ft.)



Note:
 Boring backfilled with bentonite chip

BORING - DESCRIPTION OF SAMPLES, TESTS, AND INSTALLATION

Location

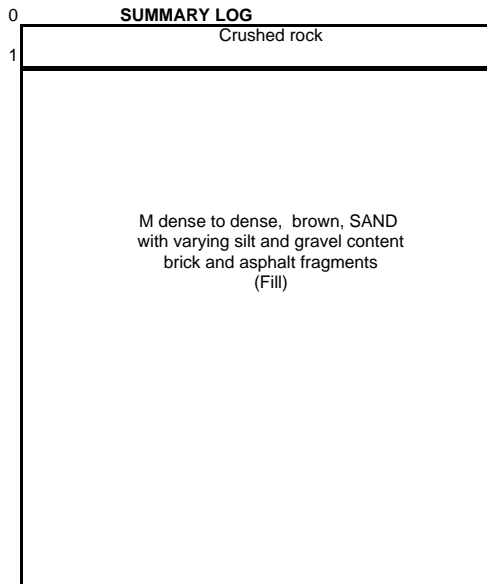
T-117-PS5

Field Rep: DG Cooper			Location: 10' outside curb (toward waterway)				
Drilling Co.: Cascade			Elevation (Ft.):		Grnd Surface: crushed rock		
Driller: Scott			Date Completed: 6/21/05				
Drill Type: CME 75			Weather: cloudy 70F				
Size/Type Casing: 4" ID Hollow-stem auger			Hammer Type: 140 # SPT		Sampler Type: 3" dia D&M Split Spoon		
Spl.No.	Type sample saved	Drill Action	Spl Depth (Ft.) From - To	Blows/ 6 inches	Spl length inches	Time	Sample Description
T117-PS5-01	8/4 oz. jar	moderate	0-1.5	10/10/12	18	1235	0-1' - crushed rock geofabric 1-1.5' brown silty SAND w/some gravel
T117-PS5-02	8/4 oz. jar	gravelly	2.5-4	25/18/5	18	1240	Dense, damp, mot brown, silty SAND w/some gravel, brick, asphalt debris
T117-PS5-03	8/4 oz. jar		5-6.5	12/15/16	12	1245	M dense, moist, brown, gravelly, SAND w/asphalt chunk
T117-PS5-04	8/4 oz. jar		7.5-9	10/9/8	18	1250	M dense, wet, brown, F-M SAND w/some gravel, trace brick fragments

LABORATORY SAMPLES:

PCBs, TOC, Total solids
 T-117-PS5RB rinsate blank @ 1300

Depth(ft.)



Note:
 Boring backfilled with bentonite chip

BORING - DESCRIPTION OF SAMPLES, TESTS, AND INSTALLATION

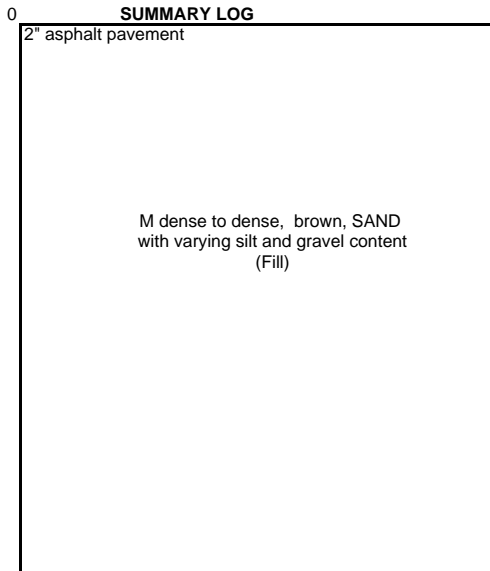
Location

T-117-PS6

Field Rep: DG Cooper				Location: 12' landward of curb			
Drilling Co.: Cascade				Elevation (Ft.):			
Driller: Scott				Date Completed: 6/21/05			
Drill Type: CME 75				Weather: cloudy 70F			
Size/Type Casing: 4" ID Hollow-stem auger				Hammer Type: 140 # SPT		Sampler Type: 3' dia D&M Split Spoon	
Grnd Surface: asphalt pavement							
Spl.No.	Type sample saved	Drill Action	Spl Depth (Ft.) From - To	Blows/ 6 inches	Spl length inches	Time	Sample Description
T117-PS6-01	8/4 oz. jar		0-1.5	20/20/23	18	1155	Dense, moist, Dk brown, gravelly, SAND w/trace silty,oily odor, stained
T117-PS6-02	8/4 oz. jar	gravelly	2.5-4	20/23/25	18	1200	Dense, moist, brown, F-M SAND w/trace gravel, wood, stained @ top
T117-PS6-03	8/4 oz. jar		5-6.5	14/12/12	18	1205	M dense, moist, Dk gray, F-M SAND w/trace gravel
T117-PS6-04	8/4 oz. jar	gravelly	7.5-9	12/12/12	18	1210	M dense, moist, mot gray/brown, gravelly SAND w/ stained-cemented layer @ 8'

LABORATORY SAMPLES: PCBs, TOC, Total solids

Depth(ft.)



Note:
Boring backfilled with bentonite chip

BORING - DESCRIPTION OF SAMPLES, TESTS, AND INSTALLATION

Location

T-117-PS7

Field Rep: DG Cooper			Location: 10' landward of curb, 5' west of PS7 probe				
Drilling Co.: Cascade			Elevation (Ft.):		Grnd Surface: asphalt pavement		
Driller: Scott			Date Completed: 6/21/05				
Drill Type: CME 75			Weather: cloudy 70F				
Size/Type Casing: 4" ID Hollow-stem auger			Hammer Type: 140 # SPT		Sampler Type: 3" dia D&M Split Spoon		
Spl.No.	Type sample saved	Drill Action	Spl Depth (Ft.) From - To	Blows/ 6 inches	Spl length inches	Time	Sample Description
T117-PS7-01	8/4 oz. jar		0-1.5	16/18/20	18	1455	Dense, moist, Gray, gravelly, SAND w/some silty, oily odor
		V hard					
T117-PS7-02	8/4 oz. jar	gravelly	2.5-4	42/50-6"	12	1500	V dense, damp, mot brown, gravelly SAND w/trace silt, concrete
T117-PS7-03	no recovery		5-6.5	20/24/26			no recovery
T117-PS7-04	8/4 oz. jar		7.5-9	38/5/5	6	1510	Dense, damp, gray, sandy, GRAVEL w/trace silt, 2" gravel

LABORATORY SAMPLES: PCBs, TOC, Total solids

Depth(ft.)

SUMMARY LOG	
0	2" asphalt pavement oily odor
	Dense to very dense gravelly SAND or sandy, GRAVEL w/ trace silt (Fill)

Note:
 Boring backfilled with bentonite chip

BORING - DESCRIPTION OF SAMPLES, TESTS, AND INSTALLATION

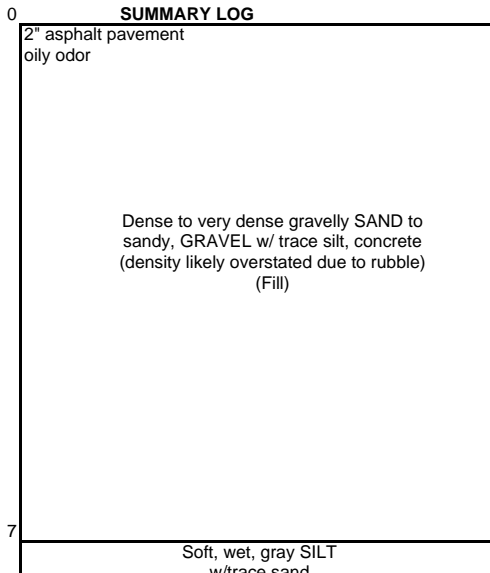
Location

T-117-PS8

Field Rep: DG Cooper			Location: 4' landward of curb on mark			Grnd Surface: asphalt pavement	
Drilling Co.: Cascade			Elevation (Ft.):				
Driller: Scott			Date Completed: 6/21/05				
Drill Type: CME 75			Weather: cloudy 70F				
Size/Type Casing: 4" ID Hollow-stem auger			Hammer Type: 140 # SPT			Sampler Type: 3" dia D&M Split Spoon	
Spl.No.	Type sample saved	Drill Action	Spl Depth (Ft.) From - To	Blows/ 6 inches	Spl length inches	Time	Sample Description
T117-PS8-01	8/4 oz. jar		0-1.5	30/50-5"	12	1005	V dense, damp, mot gry-bwn, silty, SAND w/some gravel
T117-PS8-02	8 oz. jar	Hard gravelly	2.5-4	32/50-6"	12	1010	V dense, damp, mot brown, gravelly SAND w/trace silt concrete fragments
T117-PS8-03	8 oz. jar	smooth	5-6.5	7/20/30	6	1015	Dense, damp, mot brown, snady, GRAVEL
T117-PS8-04	8/4 oz. jar		7.5-9	1/2/2	18	1020	soft, wet, gray, SILT w/trace sand gravelly sand in top 0.3'

LABORATORY SAMPLES: PCBs, TOC, Total solids

Depth(ft.)



Note:
 Boring backfilled with bentonite chip

BORING - DESCRIPTION OF SAMPLES, TESTS, AND INSTALLATION

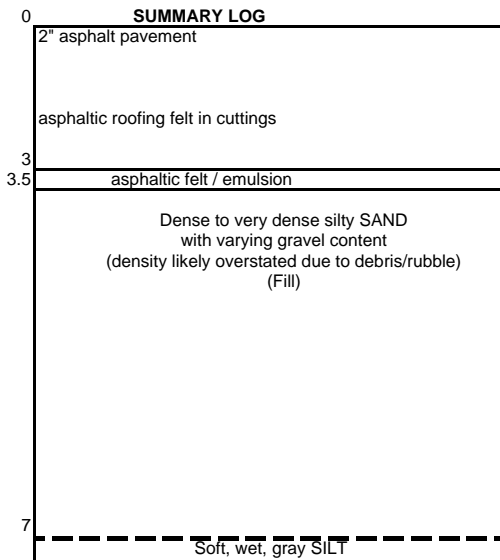
Location

T-117-PS10

Field Rep: DG Cooper			Location: edge of pavement 6' waterside of mark				
Drilling Co.: Cascade			Elevation (Ft.):			Grnd Surface: asphalt pavement	
Driller: Scott			Date Completed: 6/21/05				
Drill Type: CME 75			Weather: cloudy 70F				
Size/Type Casing: 4" ID Hollow-stem auger			Hammer Type: 140 # SPT			Sampler Type: 3" dia D&M Split Spoon	
Spl.No.	Type sample saved	Drill Action	Spl Depth (Ft.) From - To	Blows/ 6 inches	Spl length inches	Time	Sample Description
T117-PS10-01	8/4 oz. jar		0-1.5	16/20/25	18	0850	Dense, moist, mot brown, gravelly, SAND w/some silt
T117-PS10-02	8/4 oz. jar	Hard gravelly	2.5-4	30/50-6"	12	0855	V dense, moist, mot brown, silty, SAND w/some gravel, asphalt felt/emulsion from 3-3.5'
T117-PS10-03	8 oz. jar	smooth	5-6.5	50-6"	6	0900	V dense, moist, Dk brown, silty, SAND w/trace gravel, wood chips
T117-PS10-04	8/4 oz. jar		7.5-9	1/2/2	18	0905	Soft, wet, gray, SILT w/trace sand

LABORATORY SAMPLES: PCBs, TOC, Total solids

Depth(ft.)



Note:
Boring backfilled with bentonite chip

BORING - DESCRIPTION OF SAMPLES, TESTS, AND INSTALLATION

Location

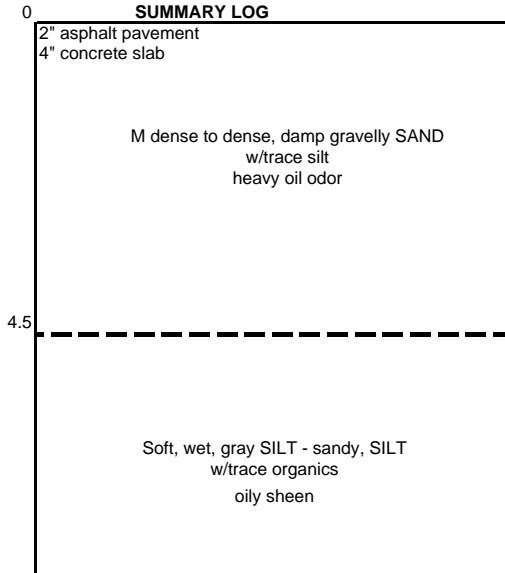
T-117-PS12

Field Rep: DG Cooper		Location: 5' landward of mark, 10' west of MW-2	
Drilling Co.: Cascade		Elevation (Ft.):	
Driller: Scott		Date Completed: 6/21/05	
Drill Type: CME 75		Weather: cloudy 70F	
Size/Type Casing: 4" ID Hollow-stem auger		Hammer Type: 140 # SPT	
		Sampler Type: 3' dia D&M Split Spoon	
Grnd Surface: asphalt pavement over concrete slab			

Spl.No.	Type sample saved	Drill Action	Spl Depth (Ft.) From - To	Blows/ 6 inches	Spl length inches	Time	Sample Description
T117-PS12-01	8/4 oz. jar	gravelly	0-1.5	13/13/15	18	0815	M dense, damp, gray, gravelly SAND w/trace silt, oily odor
T117-PS12-02	8/4 oz. jar	smooth	2.5-4	15/30/32	18	0820	Dense, damp, gray, gravelly SAND w/trace silt, oily odor
T117-PS12-03	8/4 oz. jar		5-6.5	3/3/3	18	0825	Soft, wet, grey, SILT oily sheen
T117-PS12-04	8/4 oz. jar		7.5-9	2/2/4	18	0830	Soft wet, gray, F sandy, SILT w/trace organics @ 8.5' oil sheen in root casts

LABORATORY SAMPLES: PCBs, TOC, Total solids

Depth(ft.)



Note:
 Boring backfilled with bentonite chip

T-117-PD1

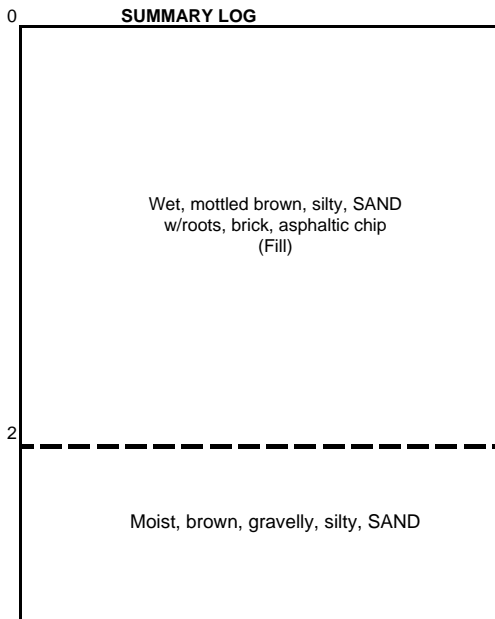
BORING - DESCRIPTION OF SAMPLES, TESTS, AND INSTALLATION

Location

Field Rep: DG Cooper				Location: South ditch - on station			
Drilling Co.: Cascade				Elevation (Ft.): ~4' above grade		Grnd Surface: Duff	
Driller: Jamis				Date Completed: 6/8/05			
Drill Type: Percussion - Hand Probe				Weather: cloudy 60F			
Size/Type Casing: 2" rod				Hammer Type: 60# jackhammer		Sampler: 4' x 1.25" acrylic-lined core tube	
Spl.No.	Type sample saved	Drill Action	Spl Depth (Ft.) From - To	Blows/ 6 inches	Spl length inches	Time	Sample Description
T117-PD1-01	8/4 oz. jar	-	0-1	-	12	0930	Wet, Dk brown, silty, SAND w/roots, organics, asphaltic chips
T117-PD1-02	8/4 oz. jar	-	1-2	-	4	0931	Wet, Mot brown, silty SAND w/brick, gravel
T117-PD1-03	8/4 oz. jar	-	2-3	-	12	0932	Moist, brown, gravelly, silty, SAND

LABORATORY SAMPLES: PCBs, TOC, Total solids
 T-117-DUPL1 duplicate of T117-PD1-01 @ 0930

Depth(ft.)



Note:
 Boring backfilled with bentonite chip

T-117-PD2

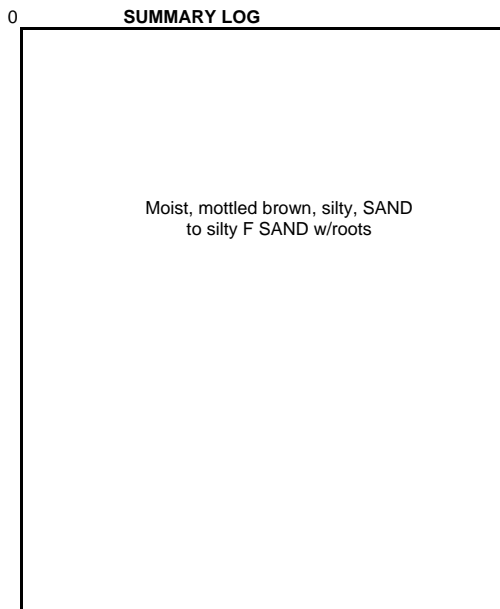
BORING - DESCRIPTION OF SAMPLES, TESTS, AND INSTALLATION

Location

Field Rep: DG Cooper				Location: South ditch - 8' west of staked location			
Drilling Co.: Cascade				Elevation (Ft.): ~4' above grade		Grnd Surface: Duff	
Driller: Jamis				Date Completed: 6/8/05			
Drill Type: Percussion - Hand Probe				Weather: cloudy 60F			
Size/Type Casing: 2" rod				Hammer Type: 60# jackhammer		Sampler: 4' x 1.25" acrylic-lined core tube	
Spl.No.	Type sample saved	Drill Action	Spl Depth (Ft.) From - To	Blows/ 6 inches	Spl length inches	Time	Sample Description
T117-PD2-01	8/4 oz. jar	-	0-1	-	12	1001	Moist, Dk brown, organic, silty, SAND
T117-PD2-02	8/4 oz. jar	-	1-2	-	8	1002	Moist, mot brown, silty, SAND w/trace gravel
T117-PD2-03	8/4 oz. jar	-	2-3	-	8	1003	Wet, brown, silty, F SAND w/roots

LABORATORY SAMPLES: PCBs, TOC, Total solids

Depth(ft.)



Note:
Boring backfilled with bentonite chip

T-117-PD3

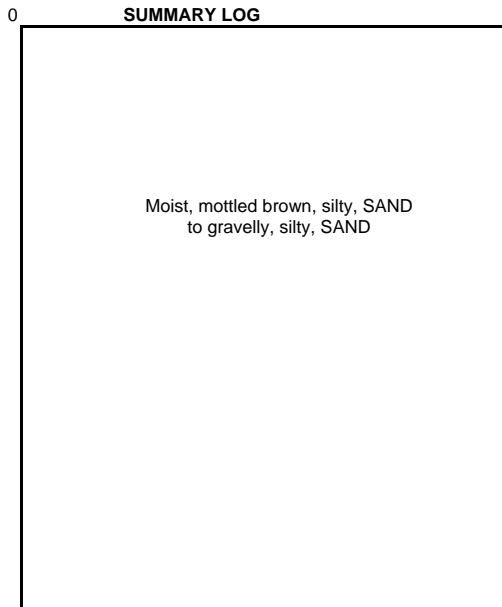
BORING - DESCRIPTION OF SAMPLES, TESTS, AND INSTALLATION

Location

Field Rep: DG Cooper				Location: South ditch - staked location			
Drilling Co.: Cascade				Elevation (Ft.): ~4' above grade		Grnd Surface: Duff	
Driller: Jamis				Date Completed: 6/8/05			
Drill Type: Percussion - Hand Probe				Weather: cloudy 60F			
Size/Type Casing: 2" rod				Hammer Type: 60# jackhammer		Sampler: 4' x 1.25" acrylic-lined core tube	
Spl.No.	Type sample saved	Drill Action	Spl Depth (Ft.) From - To	Blows/ 6 inches	Spl length inches	Time	Sample Description
T117-PD3-01	8/4 oz. jar	-	0-1	-	12	1030	Moist, Dk bwn, silty, SAND w/organics, roots
T117-PD3-02	8/4 oz. jar	-	1-2	-	12	1031	Moist, mot brown, silty, SAND w/trace gravel
T117-PD3-03	8/4 oz. jar	-	2-3	-	12	1032	Moist, mot brown, gravelly, silty, SAND

LABORATORY SAMPLES: PCBs, TOC, Total solids

Depth(ft.)



Note:
 Boring backfilled with bentonite chip

T-117-PD4

BORING - DESCRIPTION OF SAMPLES, TESTS, AND INSTALLATION

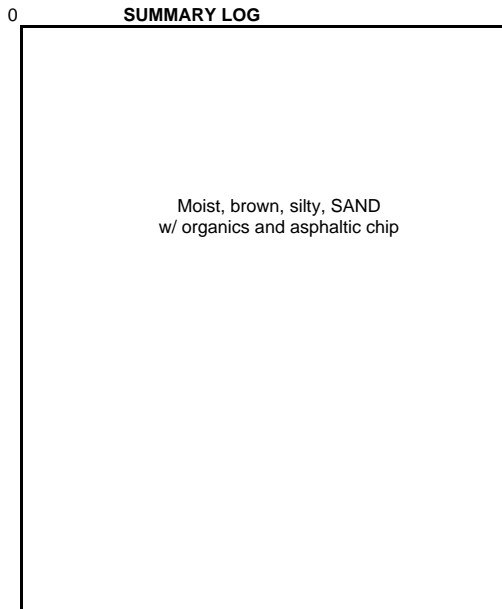
Location

Field Rep: DG Cooper				Location: South ditch - staked location			
Drilling Co.: Cascade				Elevation (Ft.): ~4' above grade		Grnd Surface: Duff	
Driller: Jamis				Date Completed: 6/8/05			
Drill Type: Percussion - Hand Probe				Weather: cloudy 60F			
Size/Type Casing: 2" rod				Hammer Type: 60# jackhammer		Sampler: 4' x 1.25" acrylic-lined core tube	
Spl.No.	Type sample saved	Drill Action	Spl Depth (Ft.) From - To	Blows/ 6 inches	Spl length inches	Time	Sample Description
T117-PD4-01	8 oz. jar	-	0-1	-	12	0910	Wet, brown silty, F SAND w/organics, roots
T117-PD4-02	8/4 oz. jar	-	1-2	-	12	0911	Moist, brown, silty, SANDw/some gravel trace asphaltic chip
T117-PD4-03	8/4 oz. jar	-	2-3	-	12	0912	Moist, brown, silty, SANDw/some gravel trace asphaltic chip

LABORATORY SAMPLES:

PCBs, TOC, Total solids
 T117-PD4RB rinsate blank @ 0920

Depth(ft.)



Note:
 Boring backfilled with bentonite chip

T-117-PD5

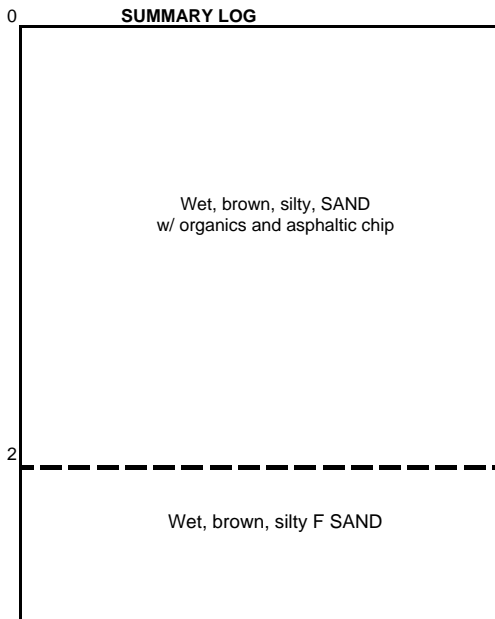
BORING - DESCRIPTION OF SAMPLES, TESTS, AND INSTALLATION

Location

Field Rep: DG Cooper				Location: South ditch - staked location			
Drilling Co.: Cascade				Elevation (Ft.): ~4' above grade		Grnd Surface: Duff	
Driller: Jamis				Date Completed: 6/8/05			
Drill Type: Percussion - Hand Probe				Weather: cloudy 60F			
Size/Type Casing: 2" rod				Hammer Type: 60# jackhammer		Sampler: 4' x 1.25" acrylic-lined core tube	
Spl.No.	Type sample saved	Drill Action	Spl Depth (Ft.) From - To	Blows/ 6 inches	Spl length inches	Time	Sample Description
T117-PD5-01	8 oz. jar	-	0-1	-	8	0905	Wet, Dk brown, organic, silty, SAND with asphaltic chips @ 0.8'
T117-PD5-02	8 oz. jar	-	1-2	-	8	0906	Wet, brown, silty, SAND w/trace asphaltic chip
T117-PD5-03	8/4 oz. jar	-	2-3	-	12	0907	Wet, brown, silty, F SAND

LABORATORY SAMPLES: PCBs, TOC, Total solids

Depth(ft.)



Note:
 Boring backfilled with bentonite chip

T-117-PD6

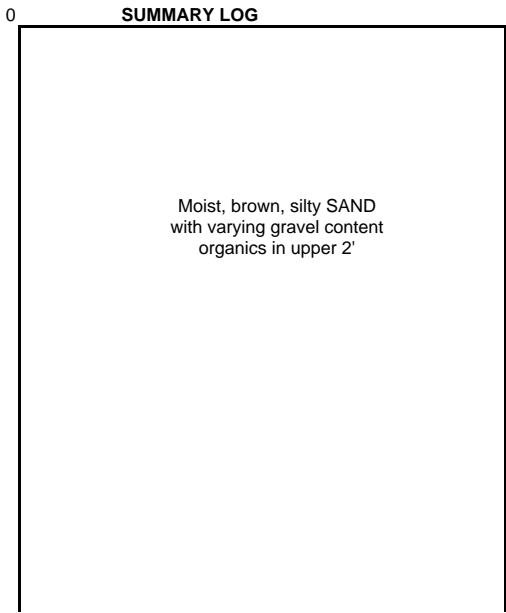
BORING - DESCRIPTION OF SAMPLES, TESTS, AND INSTALLATION

Location

Field Rep: DG Cooper				Location: South ditch - staked location			
Drilling Co.: Cascade				Elevation (Ft.): ~4' above grade		Grnd Surface: Duff	
Driller: Jamis				Date Completed: 6/8/05			
Drill Type: Percussion - Hand Probe				Weather: cloudy 60F			
Size/Type Casing: 2" rod				Hammer Type: 60# jackhammer		Sampler: 4' x 1.25" acrylic-lined core tube	
Spl.No.	Type sample saved	Drill Action	Spl Depth (Ft.) From - To	Blows/ 6 inches	Spl length inches	Time	Sample Description
T117-PD6-01	8 oz. jar	-	0-1	-	8	1040	Moist, Dk brown, silty, SAND w/organics
T117-PD6-02	8 oz. jar	-	1-2	-	8	1041	Moist, brown, silty, SAND w/trace gravel, roots
T117-PD6-03	8 oz. jar	-	2-3	-	8	1042	Moist, mot brown, silty, SAND w/some gravel

LABORATORY SAMPLES: PCBs, TOC, Total solids

Depth(ft.)



Note:
Boring backfilled with bentonite chip

T-117-PD7

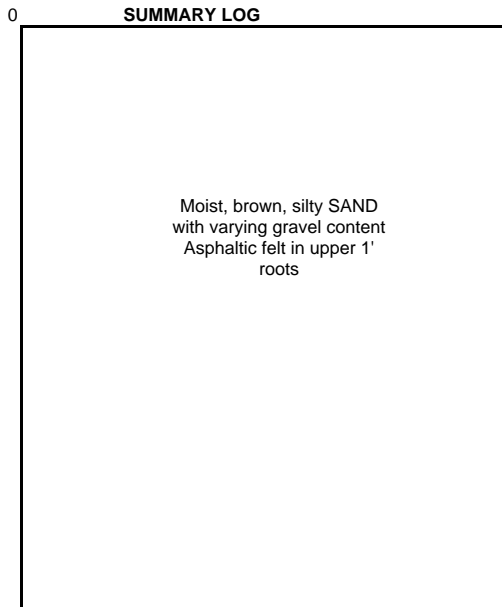
BORING - DESCRIPTION OF SAMPLES, TESTS, AND INSTALLATION

Location

Field Rep: DG Cooper				Location: South ditch - staked location			
Drilling Co.: Cascade				Elevation (Ft.): ~4' above grade		Grnd Surface: Duff	
Driller: Jamis				Date Completed: 6/8/05			
Drill Type: Percussion - Hand Probe				Weather: cloudy 60F			
Size/Type Casing: 2" rod				Hammer Type: 60# jackhammer		Sampler: 4' x 1.25" acrylic-lined core tube	
Spl.No.	Type sample saved	Drill Action	Spl Depth (Ft.) From - To	Blows/ 6 inches	Spl length inches	Time	Sample Description
T117-PD7-01	8/4 oz. jar	-	0-1	-	12	0815	Wet, Dk brown, silty, SAND w/roots, asphaltic felt debris 0.3' thick
T117-PD7-02	8/4 oz. jar	-	1-2	-	12	0816	Wet, Mot brown, silty, SAND w/trace gravel roots
T117-PD7-03	8/4 oz. jar	-	2-3	-	12	0817	Wet, Mot brown, silty, SAND w/trace gravel roots

LABORATORY SAMPLES: PCBs, TOC, Total solids

Depth(ft.)



Note:
Boring backfilled with bentonite chip

T-117-PD8

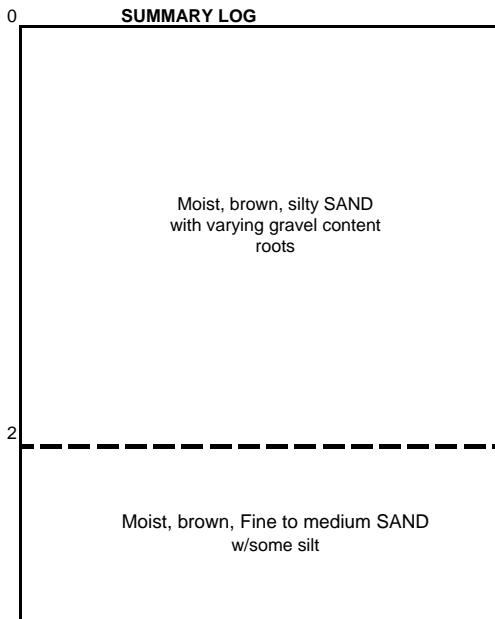
BORING - DESCRIPTION OF SAMPLES, TESTS, AND INSTALLATION

Location

Field Rep: DG Cooper				Location: South ditch - staked location			
Drilling Co.: Cascade				Elevation (Ft.): ~4' above grade		Grnd Surface: Duff	
Driller: Jamis				Date Completed: 6/8/05			
Drill Type: Percussion - Hand Probe				Weather: cloudy 60F			
Size/Type Casing: 2" rod				Hammer Type: 60# jackhammer		Sampler: 4' x 1.25" acrylic-lined core tube	
Spl.No.	Type sample saved	Drill Action	Spl Depth (Ft.) From - To	Blows/ 6 inches	Spl length inches	Time	Sample Description
T117-PD8-01	8/4 oz. jar	-	0-1	-	12	0840	Wet, Dk brown, silty, SAND w/organics, roots
T117-PD8-02	8 oz. jar	-	1-2	-	12	0841	Moist, brown, silty, SAND w/some gravel
T117-PD8-03	8/oz. jar	-	2-3	-	12	0842	Moist, brown, F-M SAND w/some silt

LABORATORY SAMPLES: PCBs, TOC, Total solids

Depth(ft.)



Note:
Boring backfilled with bentonite chip